



S  
T  
R  
E  
N  
G  
T  
H  
E  
N

project risk mgmt • bcr • health & safety • rmis • claims admin • esg • tprm • compliance • policy mgmt • internal audit • erm



**RISK** UNDER  
ONE **ROOF**

Confidential

# Modernize, Empower, and Elevate Your Risk Practice: Risk Models at Your Fingertips

Ben Fidlow, *Global Head of Core Analytics*

Ann Attardi, *Client Engagement*



# Evolution of Risk Management



**Broader issues**



**Connectivity of risks**



**Proactive engagement**



**Board level elevation**

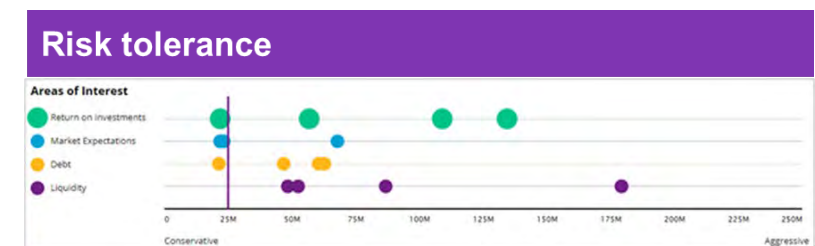
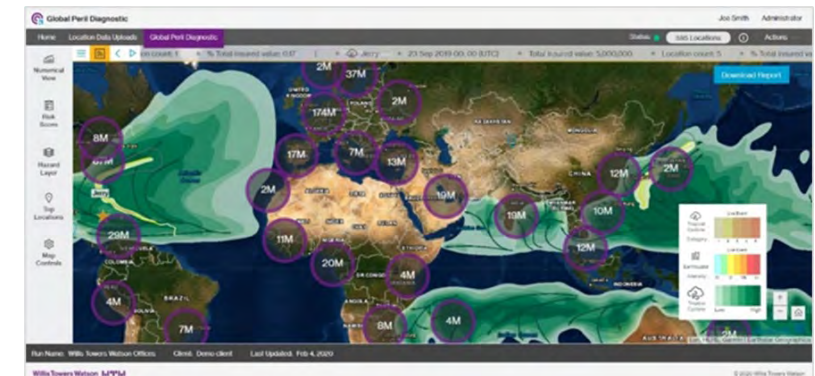
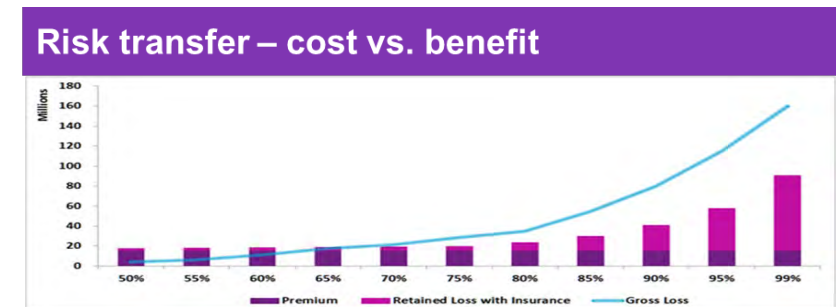
- Pandemic
- Supply chain
- Climate
- ESG
- Cyber

# A More Proactive Approach



# Analytics & Technology Changing the Game

- Be bold – a new found autonomy
- Ask for more
- Scenario analysis & planning
- Increased efficiency
- Focus on the key issues



# How to Advance Your Journey



**Start small**



**Expand analytic footprint**

Climate/ESG/ERM/Supply Chain – Go from cost to value



**Embed risk into every business decision**

# Questions?



erm • internal audit • internal mgmt • policy mgmt • compliance • irpm • esq • claims admin • rmis • health & safety • bcr • project risk mgmt

DISCOVER

**RISK** UNDER  
**ONE** **ROOF**

Confidential



# Connect with us.



**Ben Fidlow**

**e:** [ben.fidlow@wtwco.com](mailto:ben.fidlow@wtwco.com)

**t:** (212) 915-8709

**w:** [wtwco.com/en-US/Solutions/corporate-risk-tools-and-technology](http://wtwco.com/en-US/Solutions/corporate-risk-tools-and-technology)



**Ann Attardi**

**e:** [ann.attardi@wtwco.com](mailto:ann.attardi@wtwco.com)

**t:** (212) 915-7858

**w:** [wtwco.com/en-US/Solutions/products/risk-intelligence-quantified](http://wtwco.com/en-US/Solutions/products/risk-intelligence-quantified)